



THIS COPY HAS BEEN MADE BY OR WITH THE
 AUTHORITY OF RYEDALE DISTRICT COUNCIL
 PURSUANT TO SECTION 21 OF THE COPYRIGHT,
 DESIGN AND PATENTS ACT 1988 UNLESS
 THAT ACT PROVIDES A FURTHER EXCEPTION TO
 COPYRIGHT. THE COPY MUST NOT BE COPIED
 WITHOUT THE PRIOR PERMISSION OF THE
 COPYRIGHT OWNER.

RYEDALE DM
 30 JUL 2013
 DEVELOPMENT
 MANAGEMENT

2012-203-Weaverthorpe-WW-Fig 13-VP09.dwg © 2B Landscape Consultancy Ltd

2B Landscape Consultancy Ltd
 assessment - design - visualisation - realisation

11 Weaverthorpe Lane
 North Cave
 East Yorkshire
 YO15 1LF
 Tel: 01482 832954
 www.2blandscape.co.uk

Distance to turbine: 1.37km
 Bearing to turbine: 149°
 Viewpoint grid reference: 495378,470531 - see Figure 07
 Date & time of photo: 02/05/2013 12:05
 Camera: Canon Digital SLR with 50mm focal length equivalent lens
 Angle of view 90°, held A3 print at 430mm distance for accurate scale effect

Revision: -
 Scale: -
 Drawn: ACM
 Date: July 2013

Sheet Size: A3 Landscape
 Checked: BB
 File Name: 2012-203-Weaverthorpe-WW-Fig13,1-VP09.pdf

Project: Proposed turbine, Weaverthorpe
 Client: Weaverthorpe Wind
 Drawing title: Viewpoint 09- Existing

Fig:
 13.1

THIS COPY HAS BEEN MADE BY OR WITH THE AUTHORITY OF BREDA'S LOCAL COUNCIL PURSUANT TO SECTION 107 OF THE COPYRIGHT, DESIGN AND PATENTS ACT 1988 UNLESS THAT ACT PROVIDES A SPECIAL EXCEPTION TO COPYRIGHT. THE COPYRIGHT NOT BE COPIED WITHOUT THE PRIOR PERMISSION OF THE COPYRIGHT OWNER.

Weaverthorpe Wind Turbine



Vertical guidelines are at intervals of 10°, numbers at 20°, where 0° is Grid North.

RYEDAILE DM
30 JUL 2013
DEVELOPMENT
MANAGEMENT

2012-2013-Weaverthorpe-WW-Fig13.2-VP09.cdr © 2B Landscape Consultancy Ltd

2B Landscape Consultancy Ltd
assessment · design · visualisation · realisation
www.2blandscape.co.uk

175 Westhope Lane
North Cave
East Yorkshire
HU13 3LF
Tel: 01409 623394

Distance to turbine: 1.37km
Bearing to turbine: 149°
Viewpoint grid reference: 495378,470531 - see Figure 07
Date & time of photos: 02/05/2013 12:05
Camera: Canon Digital SLR with 50mm focal length equivalent lens
Angle of view 50°, held A3 print at 430mm distance for accurate scale effect

Revision: -
Scale: -
Drawn: ACM
Date: July 2013

Sheet Size: A3 Landscape
Checked: BB
File Name: 2012-2013-Weaverthorpe-WW-Fig13.2-VP09.pdf

Project: Proposed turbine, Weaverthorpe
Client: Weaverthorpe Wind
Drawing title: Viewpoint 09 - Wireframe

Fig:
13.2

THIS COPY HAS BEEN MADE BY OR WITH THE AUTHORITY OF RYEDALE DISTRICT COUNCIL PURSUANT TO SECTION 51 OF THE COPYRIGHT DESIGN AND PATENTS ACT 1988, UNLESS THAT ACT PROVIDES A NOTICED EXCEPTION TO COPYRIGHT. THE COPY MUST NOT BE COPIED WITHOUT THE PRIOR PERMISSION OF THE COPYRIGHT OWNER.



RYEDALE DM
30 JUL 2013
DEVELOPMENT
MANAGEMENT

2012-203-Weaverthorpe-WW-Fig13-VP09.cdf © 2B Landscape Consultancy Ltd

2B Landscape Consultancy Ltd
assessment - design - visualisation - realisation

12 Weaverthorpe Lane
North Cove
East Yorkshire
YO41 3LF
Tel: 01430 420294
www.2bconsultancy.co.uk

Distance to turbine: 1.37km
Bearing to turbine: 148°
Viewpoint grid reference: 495378,470531 - see Figure 07
Date & time of photos: 02/05/2013 12:05
Camera: Canon Digital SLR with 50mm focal length equivalent lens
Angle of view 50°, held A3 print at 430mm distance for accurate scale effect

Revision: -
Scale: -
Drawn: ACM
Date: July 2013
Sheet Size: A3 Landscape
Checked: BB
File Name: 2012-203-Weaverthorpe-WW-Fig13.3-VP09.pdf

Project: Proposed turbine, Weaverthorpe
Client: Weaverthorpe Wind
Drawing title: Viewpoint 09 - Photomontage

Fig: 13.3

THIS COPY HAS BEEN MADE BY OR WITH THE AUTHORITY OF RYEDALE DISTRICT COUNCIL PURSUANT TO SECTION 51 OF THE COPYRIGHT, DESIGN AND PATENTS ACT 1988. UNLESS THAT ACT PROVIDES A SEPARATE EXCEPTION TO COPYRIGHT, THE COPY MUST NOT BE COPIED WITHOUT THE PRIOR PERMISSION OF THE COPYRIGHT OWNER.



RYEDALE DM
30 JUL 2013
DEVELOPMENT
MANAGEMENT

2012-203-Weaverthorpe-WW-Fig14-VP17.cdr © 2B Landscape Consultancy Ltd

2B Landscape Consultancy Ltd
assessment - design - visualisation - realisation

12 Weaverthorpe Lane
North Cave
East Yorkshire
YO15 2JF
Tel: 01430 423204
www.2blandscape.co.uk

Distance to turbine: 2.06km
Bearing to turbine: 194°
Viewpoint grid reference: 496559,471373 - see Figure 07
Date & time of photos: 02/05/2013 13:40
Camera: Canon Digital SLR with 50mm focal length equivalent lens
Angle of view 90°, held A3 print at 420mm distance for accurate scale effect

Revision: -
Scale: -
Drawn: ACM
Date: July 2013
Sheet Size: A3 Landscape
Checked: BB
File Name: 2012-203-Weaverthorpe-WW-Fig14.1-VP17.pdf

Project: Proposed turbine, Weaverthorpe
Client: Weaverthorpe Wind
Drawing title: Viewpoint 17 - Existing

Fig:
14.1

THIS COPY HAS BEEN MADE BY US WITH THE AUTHORITY OF WEATHERS & CLIMAT CONSULTANTS LIMITED IN ACCORDANCE WITH SECTION 17(2) OF THE COPYRIGHT ACT 1988 AND VARIOUS CASES. UNLESS THAT ACT PROVIDES A SPECIFIC EXCEPTION TO COPYRIGHT, NO COPY MAY BE MADE WITHOUT THE PRIOR PERMISSION OF THE COPYRIGHT OWNER.

St Andrew's Church, Weaverthorpe

Weaverthorpe Wind Turbine



Vertical guidelines are at intervals of 10°, numbers at 20°, where 0° is Grid North.

RYDALE DM
30 JUL 2013
DEVELOPMENT
MANAGEMENT

2012-2013-Weaverthorpe-WW-Fig14-VP17.dwg © 2B Landscape Consultancy Ltd

2B Landscape Consultancy Ltd
assessment - design - visualisation - realisation

12 Weaverthorpe Lane
North Cave
East Yorkshire
YO13 3JF
Tel: 01430 823204
www.2blandscape.co.uk

Distance to turbine: 2.06km
Bearing to turbine: 194°
Viewpoint grid reference: 496559,471373 - see Figure 07
Date & time of photos: 02/05/2013 13:40
Camera: Canon Digital SLR with 50mm focal length equivalent lens
Angle of view 50°, held A3 print at 430mm distance for accurate scale effect

Revision: -
Scale: -
Drawn: ACM
Date: July 2013

Sheet Size: A3 Landscape
Checked: BB

File Name: 2012-2013-Weaverthorpe-WW-Fig14.2-VP17.pdf

Project: Proposed turbine, Weaverthorpe
Client: Weaverthorpe Wind
Drawing title: Viewpoint 17 - Wireframe

Fig:
14.2



THIS COPY HAS BEEN MADE BY OR WITH THE
 AUTHORITY OF RYEDALE DISTRICT COUNCIL.
 PURSUANT TO SECTION 47 OF THE COPYRIGHT,
 DESIGNS AND PATENTS ACT 1988. UNLESS
 THAT ACT PROVIDES A DIFFERENT PROVISION TO
 COPYRIGHT, THIS COPY WILL BE COMED
 WITHOUT THE PRIOR PERMISSION OF THE
 COPYRIGHT OWNER.

RYEDALE DM
 30 JUL 2013
 DEVELOPMENT
 MANAGEMENT

2012-203-Weaverthorpe-WW-Fig14.3-VP17.cdr © 2B Landscape Consultancy Ltd

2B Landscape Consultancy Ltd
 assessment - design - visualisation - realisation

12 Dwellford Lane
 North Cave
 East Yorkshire
 YO21 2LP
 Tel: 01430 423204
 www.2blandscape.co.uk

Distance to turbine: 2.06km
 Bearing to turbine: 194°
 Viewpoint grid reference: 496559,471373 - see Figure 07
 Date & time of photos: 02/05/2013 13:40
 Camera: Canon Digital SLR with 50mm focal length equivalent lens
 Angle of view 50°, held A3 print at 430mm distance for accurate scale effect

Revision: -
 Scale: -
 Drawn: ACM
 Date: July 2013
 Sheet Size: A3 Landscape
 Checked: BB
 File Name: 2012-203-Weaverthorpe-WW-Fig14.3-VP17.pdf

Project: Proposed turbine, Weaverthorpe
 Client: Weaverthorpe Wind
 Drawing title: Viewpoint 17 - Photomontage

Fig:
14.3

THIS COPY HAS BEEN MADE BY OR WITH THE
AUTHORITY OF PITCHER PARTNERS LIMITED
PURSUANT TO SECTION 17 OF THE COPYRIGHT,
DESIGN AND PATENTS ACT 1988 UNLESS
THE ACT PROVIDES A DIFFERENT EXCEPTION TO
COPYRIGHT. THIS COPY MUST NOT BE COPIED
WITHOUT THE PRIOR PERMISSION OF THE
COPYRIGHT OWNER



RYDALE DM
30 JUL 2013
DEVELOPMENT
MANAGEMENT

2012-203-Weaverthorpe-WW-Fig15-VP20.cdr © 2B Landscape Consultancy Ltd

2B Landscape Consultancy Ltd
assessment - design - visualisation - realisation

12 Southport Lane
North Cove
East Haverham
Hunts Hill
NE15 8ST
www.2blandscape.co.uk

Distance to turbine: 3.40km
Bearing to turbine: 239°
Viewpoint grid reference: 496975,471175 - see Figure 07
Date & time of photos: 02/05/2013 14:20
Camera: Canon Digital SLR with 50mm focal length equivalent lens
Angle of view 50°, hold A3 print at 430mm distance for accurate scale effect

Revision: -
Scale: -
Drawn: ACM
Date: July 2013
Sheet Size: A3 Landscape
Checked: BB
File Name: 2012-203-Weaverthorpe-WW-Fig15.1-VP20.pdf

Project: Proposed turbine, Weaverthorpe
Client: Weaverthorpe Wind
Drawing title: Viewpoint 20 - Existing

Fig:
15.1

THIS COPY HAS BEEN MADE BY OR WITH THE AUTHORITY OF RYEDALE DISTRICT COUNCIL PURSUANT TO SECTION 106 OF THE COPYRIGHT, DESIGNS AND PATENTS ACT 1988. UNLESS THAT ACT PROVIDES A REASONABLE EXEMPTION TO COPYRIGHT, THE COPY MUST NOT BE COPIED WITHOUT THE PRIOR PERMISSION OF THE COPYRIGHT OWNER.

Weaverthorpe Wind Turbine

Wolds Valley Wind Collective Turbine



Vertical guidelines are at intervals of 10°, numbers at 20°, where 0° is Grid North.

RYEDALE DM
30 JUL 2013
DEVELOPMENT
MANAGEMENT

2012-2013-Weaverthorpe-WW-Fig15-VP20.dwg © 2B Landscape Consultancy Ltd

2B Landscape Consultancy Ltd
assessment - design - visualisation - realisation

12 Weaverthorpe Lane
North Cave
East Yorkshire
YO15 2EP
Tel: 01430 423284
www.2blandscape.co.uk

Distance to turbine: 3.40km
Bearing to turbine: 239°
Viewpoint grid reference: 498975,471175 - see Figure 07
Date & time of photos: 02/05/2013 14:20
Camera: Canon Digital SLR with 50mm focal length equivalent lens
Angle of view 50°, held A3 print at 430mm distance for accurate scale effect

Revision: -
Scale: -
Drawn: ACM
Date: July 2013

Sheet Size: A3 Landscape
Checked: BB

Project: Proposed turbine, Weaverthorpe
Client: Weaverthorpe Wind
Drawing title: Viewpoint 20 - Wireframe

Fig:
15.2

File Name: 2012-2013-Weaverthorpe-WW-Fig15.2-VP20.pdf

THIS COPY HAS BEEN MADE BY OR WITH THE AUTHORITY OF RYEDALE DISTRICT COUNCIL PURSUANT TO SECTION 51 OF THE COPYRIGHT, DESIGNS AND PATENTS ACT 1988 UNLESS THAT ACT PROVIDES A RECORD EXCEPTION TO COPYRIGHT. THE COPY MUST NOT BE COPIED WITHOUT THE PRIOR PERMISSION OF THE COPYRIGHT OWNER.



RYEDALE DM

30 JUL 2013

DEVELOPMENT
MANAGEMENT

2012-203-Weaverthorpe-WW-Fig15-VP20.cdr © ZB Landscape Consultancy Ltd

ZB Landscape Consultancy Ltd
assessment - design - visualisation - realisation

12 Zoope Lane
North Cove
Eastbourne
TQ13 5LP
Tel: 01323 403284
www.zblandscape.co.uk

Distance to turbine: 3.40km
Bearing to turbine: 239°
Viewpoint grid reference: 488975.471175 - see Figure 07
Date & time of photos: 02/05/2013 14:20
Camera: Canon Digital SLR with 50mm focal length equivalent lens
Angle of view 50°, A3 print at 430mm distance for accurate scale effect

Revision: -
Scale: -
Drawn: ACM
Date: July 2013
File Name: 2012-203-Weaverthorpe-WW-Fig15.3-VP20.pdf

Sheet Size: A3 Landscape
Checked: BB

Project: Proposed turbine, Weaverthorpe

Client: Weaverthorpe Wind

Drawing title: Viewpoint 20 - Photomontage

Fig:

15.3

THIS COPY HAS BEEN MADE BY OR WITH THE AUTHORITY OF RYEDALE DISTRICT COUNCIL PURSUANT TO SECTION 47 OF THE COPYRIGHT DESIGN AND PATENTS ACT 1988 UNLESS THAT ACT PROVIDES A DIFFERENT EXEMPTION TO COPYRIGHT. THIS COPY MUST NOT BE COPIED WITHOUT THE PRIOR PERMISSION OF THE COPYRIGHT OWNER.



RYEDALE DM

30 JUL 2013

DEVELOPMENT
MANAGEMENT

2012-203-Weaverthorpe-WW-Fig16-VP23.odr © 2B Landscape Consultancy Ltd

 **2B Landscape Consultancy Ltd**
assessment · design · visualisation · realisation

12 Ewerthorpe Lane
North Cove
East Yorkshire
YO11 2LP
Tel: 01430 42004
www.2bconsultancy.co.uk

Distance to turbine: 5.96km
Bearing to turbine: 239°
Viewpoint grid reference: 501172,472495 - see Figure 07
Date & time of photos: 02/05/2013 14:10
Camera: Canon Digital SLR with 50mm focal length equivalent lens
Angle of view 42°, photograph not taken as a panorama to fit standard 50°, if accurate scaling effect is required, note A3 and total at 430mm distance.

Revision: -
Scale: -
Drawn: ACM
Date: July 2013

Sheet Size: A3 Landscape
Checked: BB

File Name: 2012-203-Weaverthorpe-WW-Fig16.1-VP23.pdf

Project: Proposed turbine, Weaverthorpe

Client: Weaverthorpe Wind
Drawing title: Viewpoint 23- Existing

Fig:
16.1

THIS COPY HAS BEEN MADE BY OR WITH THE AUTHORITY OF RYSDALE DISTRICT COUNCIL PURSUANT TO SECTION 51 OF THE COPYRIGHT DESIGN AND PATENTS ACT 1988 UNLESS THAT ACT PROVIDES A SPECIFIC EXCEPTION TO COPYRIGHT. THE COPY MUST NOT BE COPIED WITHOUT THE PRIOR PERMISSION OF THE COPYRIGHT OWNER.



Vertical guidelines are at intervals of 10°, numbers at 20°, where 0° is Grid North.

RYSDALE DM

30 JUL 2013

DEVELOPMENT
MANAGEMENT

2012-203-Weaverthorpe-WW-Fig16.2-VP23.cdr © 2B Landscape Consultancy Ltd

2B Landscape Consultancy Ltd
assessment - design - visualisation - realisation

12 Endhouse Lane
Moth Clee
East Yorkshire
HU10 5LP
Tel: 01404 623054
www.2blandscape.co.uk

Distance to turbine: 5.96km
Bearing to turbine: 239°
Viewpoint grid reference: 501172,472495 - see Figure 07
Date & time of photos: 02/05/2013 14:10
Camera: Canon Digital SLR with 50mm focal length equivalent lens
Angle of view 42°, photograph not taken as a panorama to fit standard 50°. If accurate scaling effect is required, crop 63 and hold at 430mm distance.

Revision: -
Scale: -
Drawn: ACM
Date: July 2013

Sheet Size: A3 Landscape
Checked: BB

File Name: 2012-203-Weaverthorpe-WW-Fig16.2-VP23.pdf

Project: Proposed turbine, Weaverthorpe

Client: Weaverthorpe Wind
Drawing title: Viewpoint 23 - Wireframe

Fig:

16.2

THIS COPY HAS BEEN MADE BY OR WITH THE AUTHORITY OF NORFOLK DISTRICT COUNCIL PURSUANT TO SECTION 42 OF THE COPYRIGHT, DESIGNS AND PATENTS ACT 1988. UNLESS THAT ACT PROVIDES A HELD-UP EXCEPTION TO COPYRIGHT, THE COPY MUST NOT BE COPIED WITHOUT THE PRIOR PERMISSION OF THE COPYRIGHT OWNER.



RYEDALE DM
30 JUL 2013
DEVELOPMENT
MANAGEMENT

2012-203-Weaverthorpe-WW-Fig16.3-VP23.caf © 2B Landscape Consultancy Ltd

2B Landscape Consultancy Ltd
assessment - design - visualisation - realisation

12 Easthenge Lane
North Cove
East Yorkshire
HU13 2LF
Tel: 01482 422234
www.2blandscape.co.uk

Distance to turbine: 5.96km
Bearing to turbine: 239°
Viewpoint grid reference: 501172.472495 - see Figure 07
Date & time of photos: 02/05/2013 14:10
Camera: Canon Digital SLR with 50mm focal length equivalent lens
Angle of view 42°, photograph not taken as a panorama to fit standard 50°, if accurate zoom effect is required, print A3 and hold at 4.90mm @ 61cm.

Revision: -
Scale: -
Drawn: ACM
Date: July 2013
File Name: 2012-203-Weaverthorpe-WW-Fig16.3-VP23.pdf

Sheet Size: A3 Landscape
Checked: BB

Project: Proposed turbine, Weaverthorpe

Client: Weaverthorpe Wind
Drawing title: Viewpoint 23 - Photomontage

Fig:
16.3

THIS COPY HAS BEEN MADE BY OR WITH THE AUTHORITY OF WREDALE DISTRICT COUNCIL PURSUANT TO SECTION 17 OF THE COPYRIGHT, DESIGN AND PATENTS ACT 1988 UNLESS THAT ACT PROVIDES A RELEVANT EXCEPTION TO COPYRIGHT. THE COPY MUST NOT BE COPIED WITHOUT THE PRIOR PERMISSION OF THE COPYRIGHT OWNER.



RYSDALE DM

30 JUL 2013

DEVELOPMENT
MANAGEMENT

2012-203-Weaverthorpe-WW-Fig17.1-VP25.pdf © 2B Landscape Consultancy Ltd

 **2B Landscape Consultancy Ltd**
assessment - design - visualisation - realisation
www.2blandscape.co.uk

12 Everhope Lane
North Cove
East Yorkshire
HU10 2LP
Tel: 01480 422204

Distance to turbine: 4.14km
Bearing to turbine: 269°
Viewpoint grid reference: 500232.469462 - see Figure 07
Date & time of photos: 02/05/2013 14:50
Camera: Canon Digital SLR with 50mm focal length equivalent lens
Angle of view 60°, held A3 print at 430mm distance for accurate scale effect

Revision: -
Scale: -
Drawn: ACM
Date: July 2013

Sheet Size: A3 Landscape
Checked: BB

File Name: 2012-203-Weaverthorpe-WW-Fig17.1-VP25.pdf

Project: Proposed turbine, Weaverthorpe
Client: Weaverthorpe Wind
Drawing title: Viewpoint 25 - Existing

Fig:
17.1



Vertical guidelines are at intervals of 10", numbers at 20", where 0" is Grid North.

THIS COPY HAS BEEN MADE BY OR WITH THE AUTHORITY OF RYEDALE DISTRICT COUNCIL PURSUANT TO SECTION 47 OF THE COPYRIGHT, DESIGNS AND PATENTS ACT 1988 UNLESS THAT ACT PROVIDES A RELIABLE EXCEPTION TO COPYRIGHT. THE COPY MUST NOT BE COPIED WITHOUT THE PRIOR PERMISSION OF THE COPYRIGHT OWNER.

RYEDALE DM
30 JUL 2013
DEVELOPMENT
MANAGEMENT

2012-203-Weaverthorpe-WW-Fig17-VP25.cdr © 2B Landscape Consultancy Ltd

2B Landscape Consultancy Ltd
assessment - design - visualisation - realisation

12 Easthope Lane
North Cote
East Yorkshire
YO13 2JF
Tel: 01430 423284
www.2blandscape.co.uk

Distance to turbine: 4.14km
Bearing to turbine: 269°
Viewpoint grid reference: 500232,489462 - see Figure 07
Date & time of photos: 02/05/2013 14:50
Camera: Canon Digital SLR with 50mm focal length equivalent lens
Angle of view 90°, held A3 print at 430mm distance for accurate scale effect

Revision: -
Scale: -
Drawn: ACM
Date: July 2013
Sheet Size: A3 Landscape
Checked: BB
File Name: 2012-203-Weaverthorpe-WW-Fig17.2-VP25.pdf

Project: Proposed turbine, Weaverthorpe
Client: Weaverthorpe Wind
Drawing title: Viewpoint 25 - Wireframe

Fig:
17.2

2012-203-Weaverthorpe-WW-Fig17.3-VP25.cdr © 2B Landscape Consultancy Ltd



THIS COPY HAS BEEN MADE BY OR WITH THE AUTHORITY OF IPSTEAL CONSULTANCY PURSUANT TO SECTION 41 OF THE COPYRIGHT DESIGN AND PATENTS ACT 1988 UNLESS OTHERWISE STATED. ANY REPRODUCTION OF THIS ACT WITHOUT THE PRIOR PERMISSION OF THE COPYRIGHT OWNER.

IPSTEAL DM
30 JUL 2013
DEVELOPMENT
MANAGEMENT

2B Landscape Consultancy Ltd
assessment - design - visualisation - realisation

10 Weaverthorpe Lane
North Cotes
East Yorkshire
HU15 8LP
Tel: 01482 425004
www.2blandscape.co.uk

Distance to turbine: 4.14km
Bearing to turbine: 269°
Viewpoint grid reference: 500232,469462 - see Figure 07
Date & time of photos: 02/05/2013 14:50
Camera: Canon Digital SLR with 50mm focal length equivalent lens
Angle of view 50°, held A3 print at 430mm distance for accurate scale effect

Revision: -
Scale: -
Drawn: ACM
Date: July 2013
Sheet Size: A3 Landscape
Checked: BB
File Name: 2012-203-Weaverthorpe-WW-Fig17.3-VP25.pdf

Project: Proposed turbine, Weaverthorpe

Client: Weaverthorpe Wind
Drawing title: Viewpoint 25 - Photomontage

Fig:
17.3



THIS COPY HAS BEEN MADE BY OR WITH THE AUTHORITY OF RYSDALE DISTRICT COUNCIL PURSUANT TO SECTION 44 OF THE COPYRIGHT, DESIGN AND PATENTS ACT 1988. UNLESS THAT ACT PROVIDES A RELEVANT EXCEPTION TO COPYRIGHT, THIS COPY MUST NOT BE COPIED WITHOUT THE PRIOR PERMISSION OF THE COPYRIGHT OWNER.

RYSDALE DM
30 JUL 2013
DEVELOPMENT
MANAGEMENT

2012-203-Weaverthorpe-WW-Fig18-VP27.cdr © 2B Landscape Consultancy Ltd

2B Landscape Consultancy Ltd
assessment - design - visualisation - realisation

12 Blue Ridge Lane
North Cove
East Yorkshire
YO15 2LP
Tel: 01470 423204
www.2blandscape.co.uk

Distance to turbine: 2.97km
Bearing to turbine: 282°
Viewpoint grid reference: 499011,468791 - see Figure 07
Date & time of photos: 02/05/2013 14:40
Camera: Canon Digital SLR with 50mm focal length equivalent lens
Angle of view 90°, held A3 print at 430mm distance for accurate scale effect

Revision: -
Scale: -
Drawn: ACM
Date: July 2013
Sheet Size: A3 Landscape
Checked: BB
File Name: 2012-203-Weaverthorpe-WW-Fig18.1-VP27.pdf

Project: Proposed turbine, Weaverthorpe
Client: Weaverthorpe Wind
Drawing title: Viewpoint 27 - Existing

Fig:
18.1

THIS COPY HAS BEEN MADE BY US WITH THE AUTHORITY OF RYEDALE TOWN COUNCIL PARLIAMENT TO SECTION 17 OF THE COPYRIGHT DESIGN AND PATENTS ACT 1988 UNLESS THAT ACT PROVIDES A DIFFERENT EXCEPTION TO COPYRIGHT. THE COPY MUST NOT BE COPIED WITHOUT THE PRIOR PERMISSION OF THE COPYRIGHT OWNER.



Vertical guidelines are at intervals of 10°, numbers at 20°, where 0° is Grid North.

RYEDALE DM
30 JUL 2013
DEVELOPMENT
MANAGEMENT

2012-203-Weaverthorpe-WW-Fig18.2-VP27.cdr © ZB Landscape Consultancy Ltd

ZB Landscape Consultancy Ltd
assessment - design - visualisation - realisation

12 Weaverthorpe Lane
North Cove
East Yorkshire
HU18 2LP
Tel: 01430 425294
www.zbconsultancy.co.uk

Distance to turbine: 2.97km
Bearing to turbine: 262°
Viewpoint grid reference: 499011.468791 - see Figure 07
Date & time of photos: 02/05/2013 14:40
Camera: Canon Digital SLR with 50mm focal length equivalent lens
Angle of view 50°, held A3 print at 430mm distance for accurate scale effect

Revision: -
Scale: -
Drawn: ACM
Date: July 2013
Sheet Size: A3 Landscape
Checked: BB
File Name: 2012-203-Weaverthorpe-WW-Fig18.2-VP27.pdf

Project: Proposed turbine, Weaverthorpe
Client: Weaverthorpe Wind
Drawing title: Viewpoint 27 - Wireframe

Fig:
18.2



THIS COPY HAS BEEN MADE BY OR WITH THE AUTHORITY OF RYEDALE DISTRICT COUNCIL PURSUANT TO SECTION 17 OF THE COPYRIGHT, DESIGNS AND PATENTS ACT 1988 UNLESS OTHERWISE PROVIDED. A RELEASE EXCEPTED TO THAT ACT PROVIDES A RELEASE EXCEPTED TO THAT ACT PROVIDED THE COPY MUST NOT BE COPIED WITHOUT THE PRIOR PERMISSION OF THE COPYRIGHT OWNER.

RYEDALE DM
30 JUL 2013
DEVELOPMENT
MANAGEMENT

2012-203-Weaverthorpe-WW-Fig18-VP27.cdr © 2B Landscape Consultancy Ltd

2B Landscape Consultancy Ltd
assessment - design - visualisation - realisation

12 Overhope Lane
North Cove
East Yorkshire
YO19 5LP
Tel: 01430 425204
www.2blandscape.co.uk

Distance to turbine: 2.97km
Bearing to turbine: 282°
Viewpoint grid reference: 499011,468791 - see Figure 07
Date & time of photos: 02/05/2013 14:40
Camera: Canon Digital SLR with 50mm focal length equivalent lens
Angle of view 50°, held A3 print at 430mm distance for accurate scale effect

Revision: -
Scale: -
Drawn: ACM
Date: July 2013
Sheet Size: A3 Landscape
Checked: BB
File Name: 2012-203-Weaverthorpe-WW-Fig18.3-VP27.pdf

Project: Proposed turbine, Weaverthorpe
Client: Weaverthorpe Wind
Drawing title: Viewpoint 27 - Photomontage

Fig:
18.3



THIS COPY HAS BEEN MADE BY OR WITH THE AUTHORITY OF WYDALE DISTRICT COUNCIL PURSUANT TO SECTION 41 OF THE COPYRIGHT DESIGN AND PATENTS ACT 1988 UNLESS THAT ACT PROVIDES A RELEVANT EXCEPTION TO COPYRIGHT. THE COPY MUST NOT BE COPIED WITHOUT THE PRIOR PERMISSION OF THE COPYRIGHT OWNER.

WYDALE DM

30 JUL 2013

DEVELOPMENT
MANAGEMENT

2012-203-Weaverthorpe-WW-Fig19.1-VP28.cdr © 2B Landscape Consultancy Ltd

2B Landscape Consultancy Ltd
assessment - design - visualisation - realisation

12 Ewerthorpe Lane
North Ouse
East Yorkshire
HU10 3JZ
Tel: 01430 423094
www.2bconsultancy.co.uk

Distance to turbine: 1.68km
Bearing to turbine: 316°
Viewpoint grid reference: 497235.468131 - see Figure 07
Date & time of photos: 02/05/2013 15:25
Camera: Canon Digital SLR with 50mm focal length equivalent lens
Angle of view 50°, held A3 print at 430mm distance for accurate scale effect

Revision: -
Scale: -
Drawn: ACM
Date: July 2013

Sheet Size: A3 Landscape
Checked: BB

Project: Proposed turbine, Weaverthorpe

Client: Weaverthorpe Wind
Drawing title: Viewpoint 28 - Existing

Fig:
19.1

File Name: 2012-203-Weaverthorpe-WW-Fig19.1-VP28.pdf



Vertical gridlines are at intervals of 10', numbers at 20', where 0° is Grid North.

THIS COPY HAS BEEN MADE BY OR UNDER THE AUTHORITY OF RYEDALE DISTRICT COUNCIL PURSUANT TO SECTION 107 OF THE COPYRIGHT, DESIGNS AND PATENTS ACT 1988. UNLESS THAT ACT PROVIDES A FURTHER EXCEPTION TO COPYRIGHT, THIS COPY MUST NOT BE COPIED WITHOUT THE EXPRESS PERMISSION OF THE COPYRIGHT OWNER.

RYEDALE DM
30 JUL 2013
DEVELOPMENT
MANAGEMENT

2012-203-Weaverthorpe-WW-Fig19.2-VP28.dwg © 2B Landscape Consultancy Ltd

2B Landscape Consultancy Ltd
assessment - design - visualisation - realisation

12 Everthorpe Lane
North Cave
East Yorkshire
YO15 2LP
Tel 01463 420204
www.2blandscape.co.uk

Distance to turbine: 1.68km
Bearing to turbine: 318°
Viewpoint grid reference: 497235,466131 - see Figure 07
Date & time of photos: 02/05/2013 15:25
Camera: Canon Digital SLR with 50mm focal length equivalent lens
Angle of view 50°, held A3 print at 430mm distance for accurate scale effect

Revision: -
Scale: -
Drawn: ACM
Date: July 2013

Sheet Size: A3 Landscape
Checked: BB

File Name: 2012-203-Weaverthorpe-WW-Fig19.2-VP28.pdf

Project: Proposed turbine, Weaverthorpe
Client: Weaverthorpe Wind
Drawing title: Viewpoint 28 - Wireframe

Fig:
19.2

2012-203-Weaverthorpe-WW-Fig19.3-VP28.cdr © 2B Landscape Consultancy Ltd



THIS COPY HAS BEEN MADE BY OR WITH THE AUTHORITY OF RYEDALE DISTRICT COUNCIL PURSUANT TO SECTION 51 OF THE COPYRIGHT, DESIGN AND PATENTS ACT 1988 UNLESS THAT ACT PROVIDES A FURTHER EXCEPTION TO COPYRIGHT. THE COPY MUST NOT BE LOANED WITHOUT THE PRIOR PERMISSION OF THE COPYRIGHT OWNER.

RYEDALE DM
30 JUL 2013
DEVELOPMENT
MANAGEMENT

2B Landscape Consultancy Ltd
assessment - design - visualisation - realisation

12 Enderbake Lane
North Cove
Suffolk
HU11 3LP
Tel 01473 42004
www.2blandscape.co.uk

Distance to turbine: 1.68km
Bearing to turbine: 318°
Viewpoint grid reference: 497235,468131 - see Figure 07
Date & time of photos: 02/05/2013 15:25
Camera: Canon Digital SLR with 50mm focal length equivalent lens
Angle of view 50°, held A3 print at 430mm distance for accurate scale effect

Revision: -
Scale: -
Drawn: ACM
Date: July 2013

Sheet Size: A3 Landscape
Checked: BB

File Name: 2012-203-Weaverthorpe-WW-Fig19.3-VP28.pdf

Project: Proposed turbine, Weaverthorpe

Client: Weaverthorpe Wind

Drawing title: Viewpoint 28 - Photomontage

Fig:

19.3



THIS COPY HAS BEEN MADE BY OR WITH THE AUTHORITY OF RYEDALE DISTRICT COUNCIL PURSUANT TO SECTION 10 OF THE COPYRIGHT, DESIGN AND PATENTS ACT 1988. UNLESS THAT ACT PROVIDES A DIFFERENT EXCEPTION TO COPYRIGHT, THE COPY MUST NOT BE COPIED WITHOUT THE PRIOR PERMISSION OF THE COPYRIGHT OWNER.

RYEDALE DM
30 JUL 2013
DEVELOPMENT
MANAGEMENT

2012-203-Weaverthorpe-WW-Fig20-VP31.cdr © 2B Landscape Consultancy Ltd

2B Landscape Consultancy Ltd
assessment - design - visualisation - realisation

10 Weaverthorpe Lane
North Cave
East Yorkshire
YO14 2JF
Tel: 01430 433294
www.2blandscape.co.uk

Distance to turbine: 2.65km
Bearing to turbine: 335°
Viewpoint grid reference: 497228,466965 - see Figure 07
Date & time of photos: 02/05/2013 16:05
Camera: Canon Digital SLR with 50mm focal length equivalent lens
Angle of view 50°, held A3 print at 430mm distance for accurate scale effect

Revision: -
Scale: -
Drawn: ACM
Date: July 2013
Sheet Size: A3 Landscape
Checked: BB
File Name: 2012-203-Weaverthorpe-WW-Fig20.1-VP31.pdf

Project: Proposed turbine, Weaverthorpe
Client: Weaverthorpe Wind
Drawing title: Viewpoint 31 - Existing

Fig:
20.1



Vertical guidelines are at intervals of 10°, numbers at 20°, where 0° is Grid North.

THIS COPY HAS BEEN MADE BY OR WITH THE AUTHORITY OF MIDDALE DISTRICT COUNCIL PURSUANT TO SECTION 107 OF THE COPYRIGHT, DESIGNS AND PATENTS ACT 1988 UNLESS NOTED OTHERWISE. PERMISSION IS GRANTED TO THAT ACT PROVIDES A SEVERANT EXCEPTION TO COPYRIGHT. THE COPY MUST NOT BE COPIED WITHOUT THE PRIOR PERMISSION OF THE COPYRIGHT OWNER.

DEYDALE DM
30 JUL 2013
DEVELOPMENT
MANAGEMENT

2012-203-Weaverthorpe-WW-Fig02-VP31.cdr © 2B Landscape Consultancy Ltd

2B Landscape Consultancy Ltd
assessment - design - visualisation - realisation
12 Weaverthorpe Lane
North Cave
East Yorkshire
YO13 2LP
Tel: 01430 422044
www.2blandscape.co.uk

Distance to turbine: 2.65km
Bearing to turbine: 335°
Viewpoint grid reference: 497228,466965 - see Figure 07
Date & time of photos: 02/05/2013 16:05
Camera: Canon Digital SLR with 50mm focal length equivalent lens
Angle of view 90°, held A3 print at 430mm distance for accurate scale effect

Revision: -
Scale: -
Drawn: ACM
Date: July 2013
Sheet Size: A3 Landscape
Checked: BB
File Name: 2012-203-Weaverthorpe-WW-Fig02-VP31.pdf

Project: Proposed turbine, Weaverthorpe
Client: Weaverthorpe Wind
Drawing title: Viewpoint 31 - Wireframe

Fig: 20.2



THIS COPY HAS BEEN MADE BY OR WITH THE
 AUTHORITY OF WINDRA DISTRICT COUNCIL
 PURSUANT TO SECTION 47 OF THE COPYRIGHT,
 DESIGN AND PATENTS ACT 1988. ANY
 THAT NOT POSSIBLE & RELEVANT DESCRIPTIONS TO
 EMPLOYMENT. THE COPY MUST NOT BE COPIED
 WITHOUT THE PRIOR PERMISSION OF THE
 COPYRIGHT OWNER.

DEDALE DM

30 JUL 2013

DEVELOPMENT
 MANAGEMENT

2012-203-Weaverthorpe-WW-Fig20.3-VP31.cdr © ZB Landscape Consultancy Ltd

ZB Landscape Consultancy Ltd
 assessment - design - visualisation - realisation

10 Everthorpe Lane
 South Cave
 East Yorkshire
 YO15 2JF
 Tel: 01430 43304
 www.zblandscape.co.uk

Distance to turbine: 2.65km
 Bearing to turbine: 335°
 Viewpoint grid reference: 497228,466965 - see Figure 07
 Date & time of photos: 02/05/2013 16:05
 Camera: Canon Digital SLR with 50mm focal length equivalent lens
 Angle of view 50°, held A3 print at 430mm distance for accurate scale effect

Revision: -
 Scale: -
 Drawn: ACM
 Date: July 2013
 Sheet Size: A3 Landscape
 Checked: BB
 File Name: 2012-203-Weaverthorpe-WW-Fig20.3-VP31.pdf

Project: Proposed turbine, Weaverthorpe
 Client: Weaverthorpe Wind
 Drawing title: Viewpoint 31 - Photomontage

Fig:
 20.3



THIS COPY HAS BEEN MADE BY LIA WITH THE AUTHORITY OF WEATHERTHORPE DISTRICT COUNCIL PURSUANT TO SECTION 54 OF THE COPYRIGHT, DESIGNS AND PATENTS ACT 1988 UNLESS THAT ACT PROVIDES A CLEARER EXCEPTION TO COPYRIGHT. THE COPY MUST NOT BE COPIED WITHOUT THE PRIOR PERMISSION OF THE COPYRIGHT OWNER.

WEATHERTHORPE DM
30 JUL 2013
DEVELOPMENT
MANAGEMENT

2012-2013-Weaverthorpe-WW-Fig21-VP01.dwg © 2B Landscape Consultancy Ltd

2B Landscape Consultancy Ltd
assessment - design - visualisation - realisation

13 Elvet Range Lane
North Cave
East Yorkshire
YO13 2LP
Tel: 01430 423014
www.2bconsultancy.co.uk

Distance to turbine: 4.57km
Bearing to turbine: 38°
Viewpoint grid reference: 493331,465733 - see Figure 07
Date & time of photos: 02/05/2013 16:25
Camera: Canon Digital SLR with 50mm focal length equivalent lens
Angle of view 50°, held A3 print at 430mm distance for accurate scale effect

Revision: -
Scale: -
Drawn: ACM
Date: July 2013

Sheet Size: A3 Landscape
Checked: BB

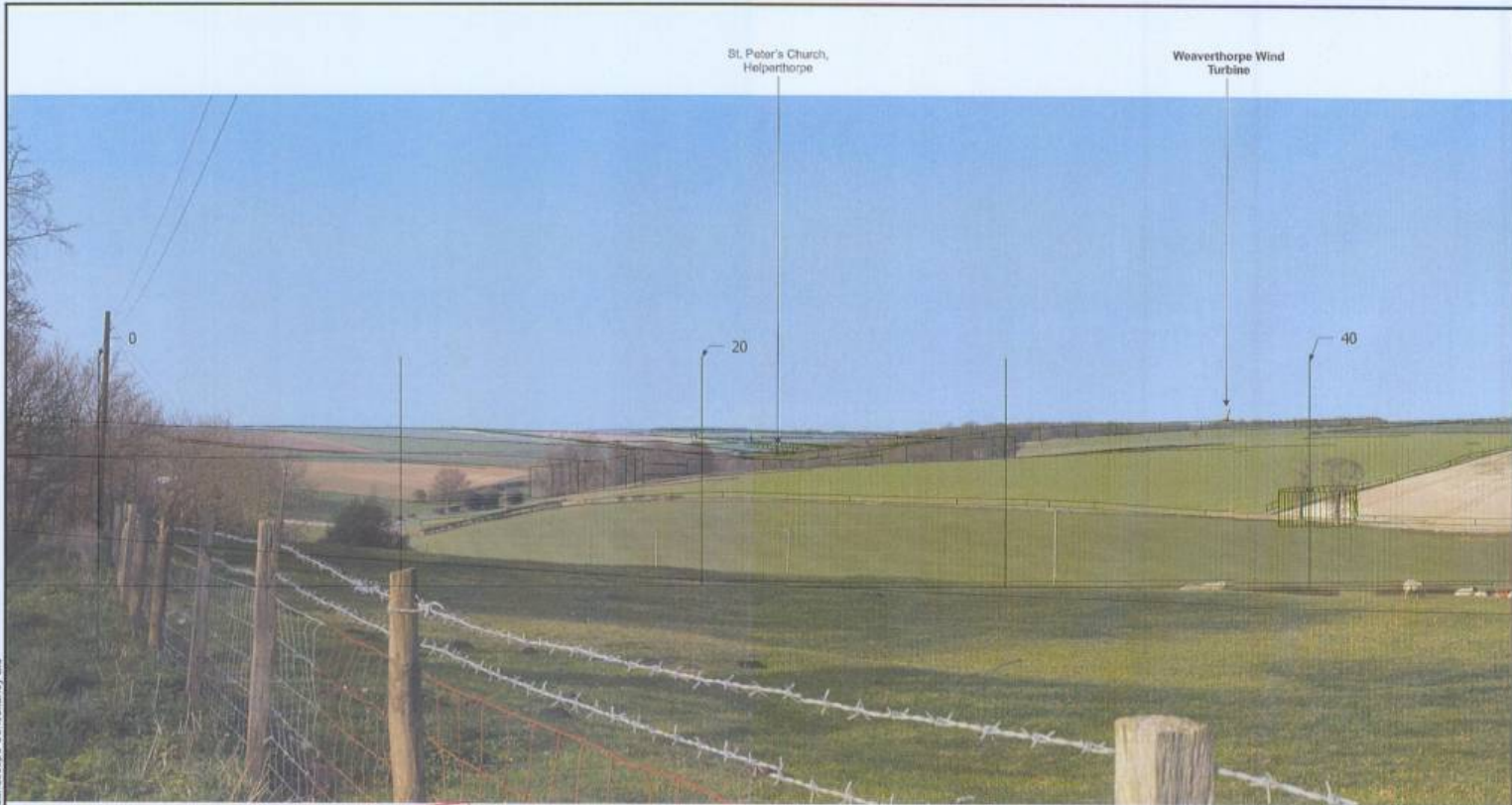
File Name: 2012-2013-Weaverthorpe-WW-Fig21,1-VP01.pdf

Project: Proposed turbine, Weaverthorpe

Client: Weaverthorpe Wind
Drawing title: Viewpoint 01 - Existing

Fig:

21.1



Vertical guidelines are at intervals of 10°, numbers at 20°, where 0° is Grid North.

THIS COPY HAS BEEN MADE BY OR WITH THE AUTHORITY OF WESTLIFE DISTRICT COUNCIL PURSUANT TO SECTION 51 OF THE COPYRIGHT, DESIGNS AND PATENTS ACT 1988 UNLESS OTHERWISE STATED. NO LIABILITY IS ACCEPTED FOR THAT ACT PROVIDES A LIMITED EXCEPTION TO COPYRIGHT. THE COPY MUST NOT BE COPIED WITHOUT THE PRIOR PERMISSION OF THE COPYRIGHT OWNER.

RYEDALE DM
30 JUL 2013
DEVELOPMENT
MANAGEMENT

2012-203-Weaverthorpe-WW-Fig21.2-VP01.cdr © 2B Landscape Consultancy Ltd

2B Landscape Consultancy Ltd
assessment · design · visualisation · realisation
www.2blandscape.co.uk

© Elevation Line
North Cove
East Yorkshire
YO15 2EP
Tel: 01430 822214
www.2blandscape.co.uk

Distance to turbine: 4.57km
Bearing to turbine: 38°
Viewpoint grid reference: 493331,465733 - see Figure 07
Date & time of photos: 02/05/2013 16:25
Camera: Canon Digital SLR with 50mm focal length equivalent lens
Angle of view 50°, held A3 print at 430mm distance for accurate scale effect

Revision: -
Scale: -
Drawn: ACM
Date: July 2013

Sheet Size: A3 Landscape
Checked: BB

File Name: 2012-203-Weaverthorpe-WW-Fig21.2-VP01.pdf

Project: Proposed turbine, Weaverthorpe
Client: Weaverthorpe Wind
Drawing title: Viewpoint 01 - Wireframe

Fig:
21.2



THIS COPY HAS BEEN MADE BY CIL WITH THE AUTHORITY OF RYEDALE DISTRICT COUNCIL PURSUANT TO SECTION 47 OF THE COPYRIGHT, DESIGNS AND PATENTS ACT 1988. UNLESS THAT ACT PROVIDES A RELEVANT EXCEPTION TO COPYRIGHT, THIS COPY MUST NOT BE COPIED WITHOUT THE PRIOR PERMISSION OF THE COPYRIGHT OWNER.

RYEDALE DM
30 JUL 2013
DEVELOPMENT
MANAGEMENT

2012-203-Weaverthorpe-WW-Fig22-VP02.cdr © 2B Landscape Consultancy Ltd

2B Landscape Consultancy Ltd
assessment - design - visualisation - realisation

12 Everidge Lane
North Cave
East Yorkshire
YO15 2LF
Tel: 01430 433204
www.2bconsultancy.co.uk

Distance to turbine: 2.35km
Bearing to turbine: 53°
Viewpoint grid reference: 494244.467929 - see Figure 07
Date & time of photos: 02/05/2013 10:55
Camera: Canon Digital SLR with 50mm focal length equivalent lens
Angle of view 50°, held A3 print at 430mm distance for accurate scale effect

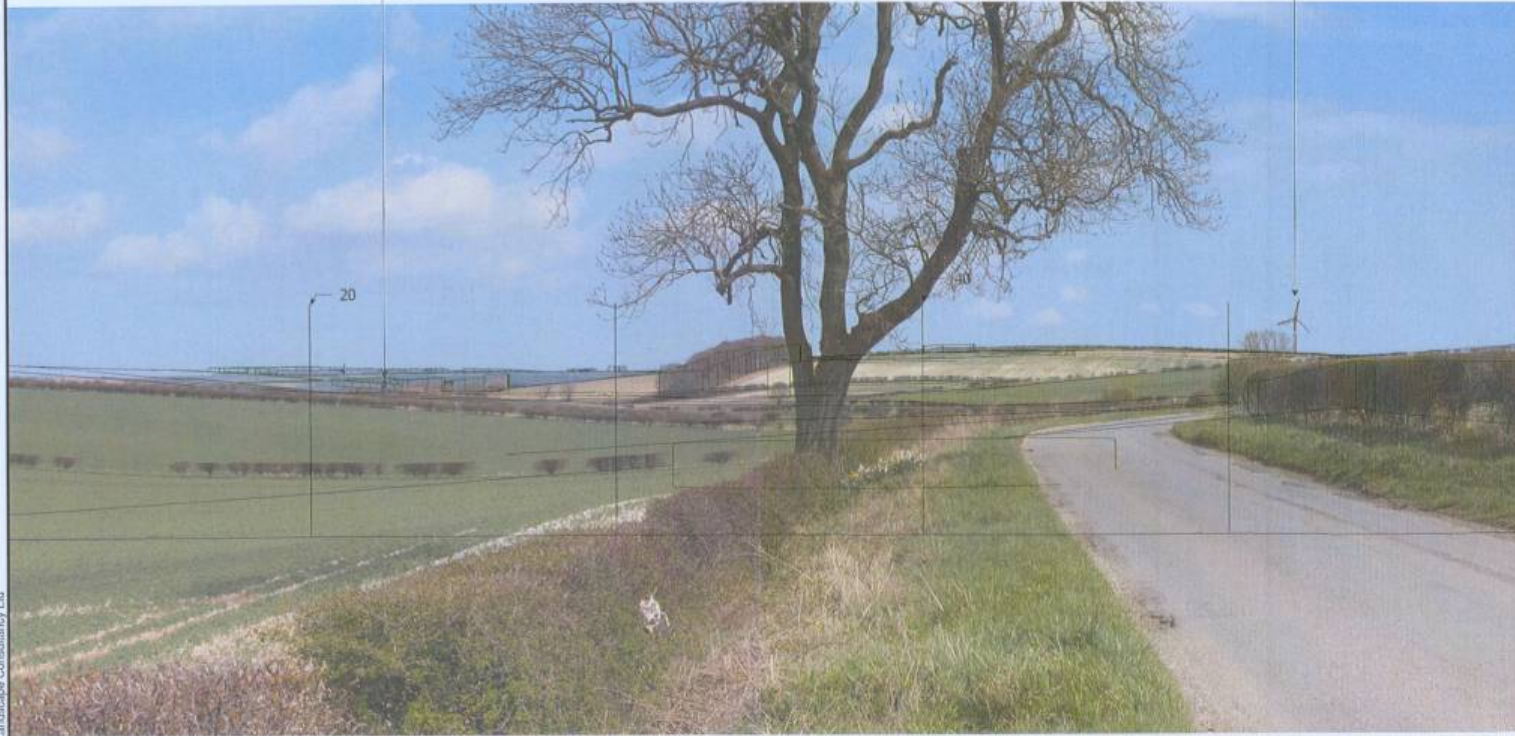
Revision: -
Scale: -
Drawn: ACM
Date: July 2013
Sheet Size: A3 Landscape
Checked: BB
File Name: 2012-203-Weaverthorpe-WW-Fig22.1-VP02.pdf

Project: Proposed turbine, Weaverthorpe
Client: Weaverthorpe Wind
Drawing title: Viewpoint 02 - Existing

Fig:
22.1

St. Peter's Church,
Helporthorpe

Weaverthorpe Wind
Turbine



Vertical guidelines are at intervals of 10°, numbers at 20°, where 0° is Grid North.

THIS COPY HAS BEEN MADE BY OR WITH THE
 AUTHORITY OF RYEDALE DISTRICT COUNCIL
 PURSUANT TO SECTION 47 OF THE COPYRIGHT
 DESIGNS AND PATENTS ACT 1988. USERS
 THAT ACT OTHERWISE IN RELATION TO THIS COPY
 OR WHICH THE COPY MUST NOT BE DERIVED
 WITHOUT THE PRIOR PERMISSION OF THE
 COPYRIGHT OWNER.

RYEDALE DM
 30 JUL 2013
 DEVELOPMENT
 MANAGEMENT

**2B Landscape
 Consultancy Ltd**
 assessment - design - visualisation - realisation

13 Droveholme Lane
 North Cave
 East Yorkshire
 YO13 0LP
 Tel: 01482 822284
 www.2blandscape.co.uk

Distance to turbine: 2.35km
 Bearing to turbine: 53°
 Viewpoint grid reference: 494244 487929 - see Figure 07
 Date & time of photos: 02/05/2013 10:55
 Camera: Canon Digital SLR with 50mm focal length equivalent lens
 Angle of view 50°, held A3 print at 430mm distance for accurate scale effect

Revision: -
 Scale: -
 Drawn: ACM
 Date: July 2013
 Sheet Size: A3 Landscape
 Checked: BB
 File Name: 2012-203-Weaverthorpe-WW-Fig22-2-VP02.pdf

Project: Proposed turbine, Weaverthorpe
 Client: Weaverthorpe Wind
 Drawing title: Viewpoint 02 - Wireframe

Fig:
 22.2

2012-203-Weaverthorpe-WW-Fig23,1-VP03.cdr © 2B Landscape Consultancy Ltd



THIS COPY HAS BEEN MADE BY ME WITH THE AUTHORITY OF THE RIGHTSHOLDER. I ACCEPT FULL RESPONSIBILITY FOR THE ACCURACY OF THE INFORMATION AND I AGREE TO BE BOUND BY THE TERMS AND CONDITIONS OF THE LICENSE. I AGREE TO BE BOUND BY THE TERMS AND CONDITIONS OF THE LICENSE. I AGREE TO BE BOUND BY THE TERMS AND CONDITIONS OF THE LICENSE.

RYEDALE DM
30 JUL 2013
DEVELOPMENT
MANAGEMENT

2B Landscape Consultancy Ltd
assessment - design - visualisation - realisation

12 Ewellthorpe Lane
North Cove
East Yorkshire
YO13 2JF
Tel: 01430 420004
www.2blandscape.co.uk

Distance to turbine: 1.67km
Bearing to turbine: 61°
Viewpoint grid reference: 494852,468534 - see Figure 07
Date & time of photos: 02/05/2013 16:15
Camera: Canon Digital SLR with 50mm focal length equivalent lens
Angle of view 50°, hold A5 print at 430mm distance for accurate scale effect

Revision: -
Scale: -
Drawn: ACM
Date: July 2013
Sheet Size: A3 Landscape
Checked: BB
File Name: 2012-203-Weaverthorpe-WW-Fig23,1-VP03.pdf

Project: Proposed turbine, Weaverthorpe
Client: Weaverthorpe Wind
Drawing title: Viewpoint 03 - Existing

Fig:
23.1



Vertical guidelines are at intervals of 10°, numbers at 20°, where 0° is Grid North.

THIS COPY HAS BEEN MADE BY OR WITH THE AUTHORITY OF RYEDALE DM COUNCIL PURSUANT TO SECTION 10 OF THE COPYRIGHT DESIGNS AND PATENTS ACT 1988. UNLESS THAT ACT PROVIDES A DIFFERENT EXCEPTION TO COPYRIGHT, THE COPY MUST NOT BE COPIED WITHOUT THE PRIOR PERMISSION OF THE COPYRIGHT OWNER.

RYEDALE DM
30 JUL 2013
DEVELOPMENT
MANAGEMENT

2012-2013-Weaverthorpe-WW-Fig23.2-VP03.cdr © 2B Landscape Consultancy Ltd

2B Landscape Consultancy Ltd
assessment - design - visualisation - realisation

12 Everthorpe Lane
North Cave
East Yorkshire
YO13 2JF
Tel: 01482 422004
www.2blandscape.co.uk

Distance to turbine: 1.67km
Bearing to turbine: 61°
Viewpoint grid reference: 494652,468534 - see Figure 07
Date & time of photos: 02/05/2013 16:15
Camera: Canon Digital SLR with 50mm focal length equivalent lens
Angle of view 50°, held A3 print at 430mm distance for accurate scale effect

Revision: -
Scale: -
Drawn: ACM
Date: July 2013

Sheet Size: A3 Landscape
Checked: BB

Project: Proposed turbine, Weaverthorpe
Client: Weaverthorpe Wind
Drawing title: Viewpoint 03 - Wireframe

Fig:
23.2

File Name: 2012-2013-Weaverthorpe-WW-Fig23.2-VP03.pdf



THIS COPY HAS BEEN MADE IN ACCORDANCE WITH THE
 AUTHORITY OF RYEDALE DISTRICT COUNCIL
 PURSUANT TO SECTION 106 OF THE COPYRIGHT,
 DESIGN AND PATENTS ACT 1988 - UNLESS
 THAT ACT PROVIDES A DIFFERENT EXCEPTION TO
 COPYRIGHT, THE COPY MUST NOT BE COPIED
 WITHOUT THE PRIOR PERMISSION OF THE
 COPYRIGHT OWNER.

RYEDALE DM
 30 JUL 2013
 DEVELOPMENT
 MANAGEMENT

2012-203-Weaverthorpe-WW-Fig24.1-VP05.dwg © 2B Landscape Consultancy Ltd

2B Landscape Consultancy Ltd
 assessment - design - visualisation - realisation

12 Weaverthorpe Lane
 North Cave
 East Yorkshire
 YO21 2LP
 Tel: 01482 423204
 www.2blandscape.co.uk

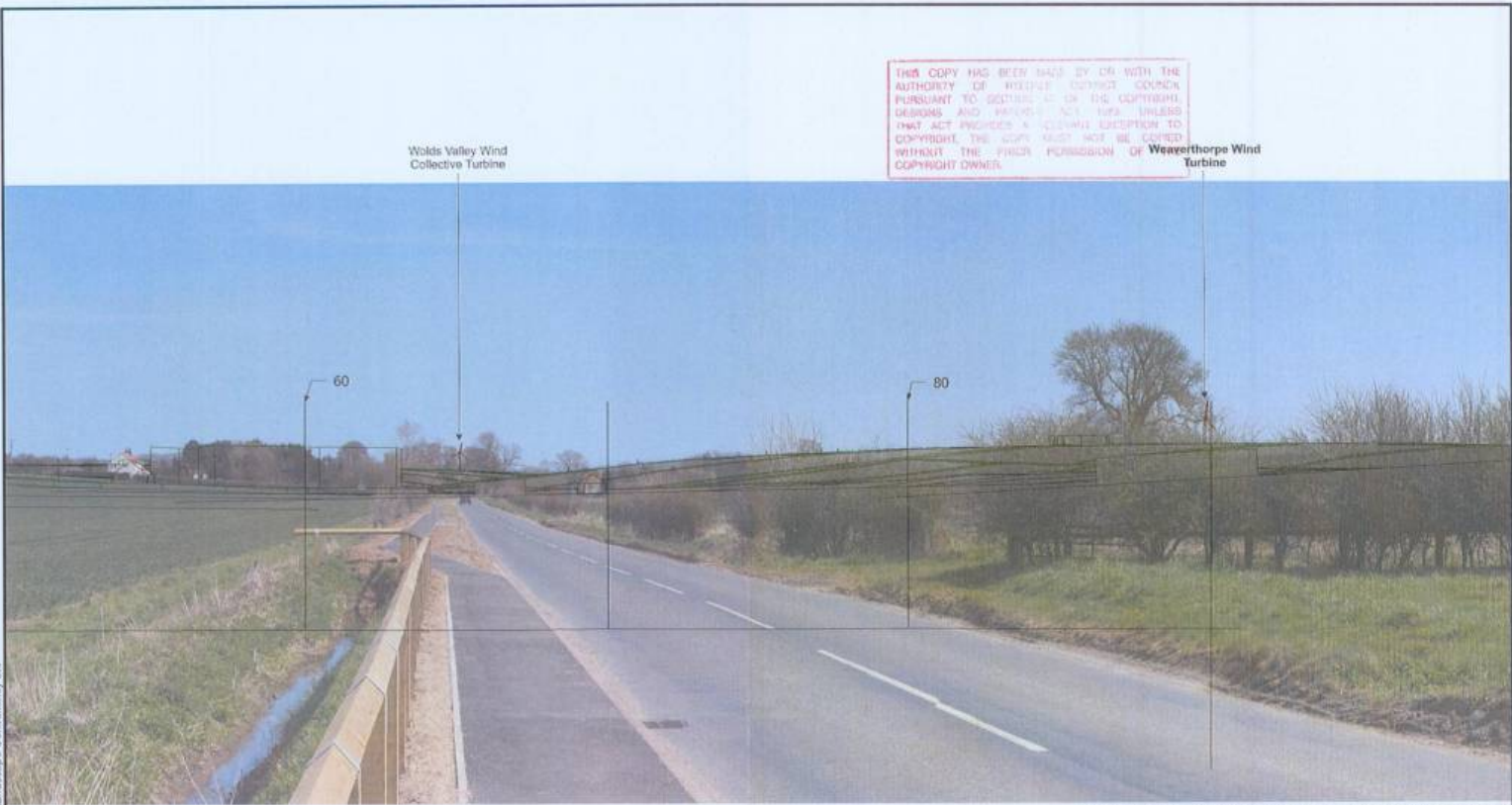
Distance to turbine: 2.55km
 Bearing to turbine: 90°
 Viewpoint grid reference: 493562.469367 - see Figure 07
 Date & time of photos: 02/05/2013 11:20
 Camera: Canon Digital SLR with 50mm focal length equivalent lens
 Angle of view 50°, held A3 print at 430mm distance for accurate scale effect

Revision: -
 Scale: -
 Drawn: ACM
 Date: July 2013
 Sheet Size: A3 Landscape
 Checked: BB
 File Name: 2012-203-Weaverthorpe-WW-Fig24.1-VP05.pdf

Project: Proposed turbine, Weaverthorpe
 Client: Weaverthorpe Wind
 Drawing title: Viewpoint 05 - Existing

Fig:
 24.1

THIS COPY HAS BEEN MADE BY OR WITH THE AUTHORITY OF RYEDALE COUNCIL PURSUANT TO SECTION 10 OF THE COPYRIGHT, DESIGNS AND PATENTS ACT 1988. UNLESS THAT ACT PROVIDES A CLEARER EXCEPTION TO COPYRIGHT, THE COPY MUST NOT BE COPIED WITHOUT THE PRIOR PERMISSION OF WEAVERTHORPE WIND TURBINE



Vertical guidelines are at intervals of 10°, numbers at 20°, where 0° is Grid North.

RYEDALE DM
30 JUL 2013
DEVELOPMENT
MANAGEMENT

2012-203-Weaverthorpe-WW-Fig24.2-VP05.dwg © 2B Landscape Consultancy Ltd

2B Landscape Consultancy Ltd
assessment - design - visualisation - realisation

12 Weaverthorpe Lane
North Cave
East Yorkshire
YO13 9JF
Tel: 01430 433214
www.2blandscape.co.uk

Distance to turbine: 2.55km
Bearing to turbine: 90°
Viewpoint grid reference: 493562,469367 - see Figure 07
Date & time of photos: 02/05/2013 11:20
Camera: Canon Digital SLR with 50mm focal length equivalent lens
Angle of view 90°, held A3 print at 430mm distance for accurate scale effect

Revision: -
Scale: -
Drawn: ACM
Date: July 2013
Sheet Size: A3 Landscape
Checked: BB
File Name: 2012-203-Weaverthorpe-WW-Fig24.2-VP05.pdf

Project: Proposed turbine, Weaverthorpe
Client: Weaverthorpe Wind
Drawing title: Viewpoint 05 - Wireframe

Fig:
24.2

2012-203-Weaverthorpe-WW-Fig25-VP07.cdr © 2B Landscape Consultancy Ltd



THIS COPY HAS BEEN MADE BY OR WITH THE AUTHORITY OF RYEDALE DISTRICT COUNCIL PURSUANT TO SECTION 41 OF THE COPYRIGHT, DESIGNS AND PATENTS ACT 1988. UNLESS THAT ACT PROVIDES A RELEVANT EXCEPTION TO COPYRIGHT, THE COPY MUST NOT BE COPIED WITHOUT THE PRIOR PERMISSION OF THE COPYRIGHT OWNER.

RYEDALE DM
30 JUL 2013
DEVELOPMENT
MANAGEMENT

2B Landscape Consultancy Ltd
assessment - design - visualisation - realisation

115 Weverthorpe Lane
North Cove
East Yorkshire
HU10 2LP
Tel: 01482 823344
www.2blandscape.co.uk

Distance to turbine: 3.13km
Bearing to turbine: 152°
Viewpoint grid reference: 494616,472119 - see Figure 07
Date & time of photos: 02/05/2013 11:45
Camera: Canon Digital SLR with 50mm focal length equivalent lens
Angle of view 50°, hold A3 print at 430mm distance for accurate scale effect

Revision: -
Scale: -
Drawn: ACM
Date: July 2013

Sheet Size: A3 Landscape
Checked: BB

File Name: 2012-203-Weaverthorpe-WW-Fig25,1-VP07.pdf

Project: Proposed turbine, Weaverthorpe
Client: Weaverthorpe Wind
Drawing title: Viewpoint 07 - Existing

Fig:
25.1



Vertical guidelines are at intervals of 10°, numbers at 20°, where 0° is Grid North.

THIS COPY HAS BEEN MADE BY OR WITH THE AUTHORITY OF RYEDALE DISTRICT COUNCIL PURSUANT TO SECTION 41 OF THE COPYRIGHT DESIGNS AND PATENTS ACT 1988 UNLESS THAT ACT PROVIDES A RELEVANT EXCEPTION TO COPYRIGHT. THE COPY MUST NOT BE COPIED WITHOUT THE PRIOR PERMISSION OF THE COPYRIGHT OWNER.

RYEDALE DM
30 JUL 2013
DEVELOPMENT
MANAGEMENT

2012-203-Weaverthorpe-WW-Fig25-VP07.cdr © 2B Landscape Consultancy Ltd

2B Landscape Consultancy Ltd
assessment - design - visualisation - realisation
www.2blandscape.co.uk

12 Ewellhouse Lane
North Cove
East Yorkshire
YO18 2LP
Tel: 01430 42204

Distance to turbine: 3.13km
Bearing to turbine: 152°
Viewpoint grid reference: 494616,472119 - see Figure 07
Date & time of photos: 02/05/2013 11:45
Camera: Canon Digital SLR with 50mm focal length equivalent lens
Angle of view 50°, held A3 print at 430mm distance for accurate scale effect

Revision: -
Scale: -
Drawn: ACM
Date: July 2013
Sheet Size: A3 Landscape
Checked: BB
File Name: 2012-203-Weaverthorpe-WW-Fig25.2-VP07.pdf

Project: Proposed turbine, Weaverthorpe
Client: Weaverthorpe Wind
Drawing title: Viewpoint 07 - Wireframe

Fig:
25.2



THIS COPY HAS BEEN MADE BY OR WITH THE
 AUTHORITY OF WEATHERTHORPE COUNCIL
 PURSUANT TO SECTION 107 OF THE COPYRIGHT,
 DESIGNS AND PATENTS ACT 1988, UNLESS
 THAT ACT PROVIDES A DELIBERATE EXCEPTION TO
 COPYRIGHT. THE COPY MUST NOT BE COPIED
 WITHOUT THE PRIOR PERMISSION OF THE
 COPYRIGHT OWNER.

RYEDALE DM

30 JUL 2013
 DEVELOPMENT
 MANAGEMENT

2012-2013-Weaverthorpe-WW-Fig26-VP10.pdf © 2B Landscape Consultancy Ltd

2B Landscape
 Consultancy Ltd
 assessment - design - visualisation - realisation

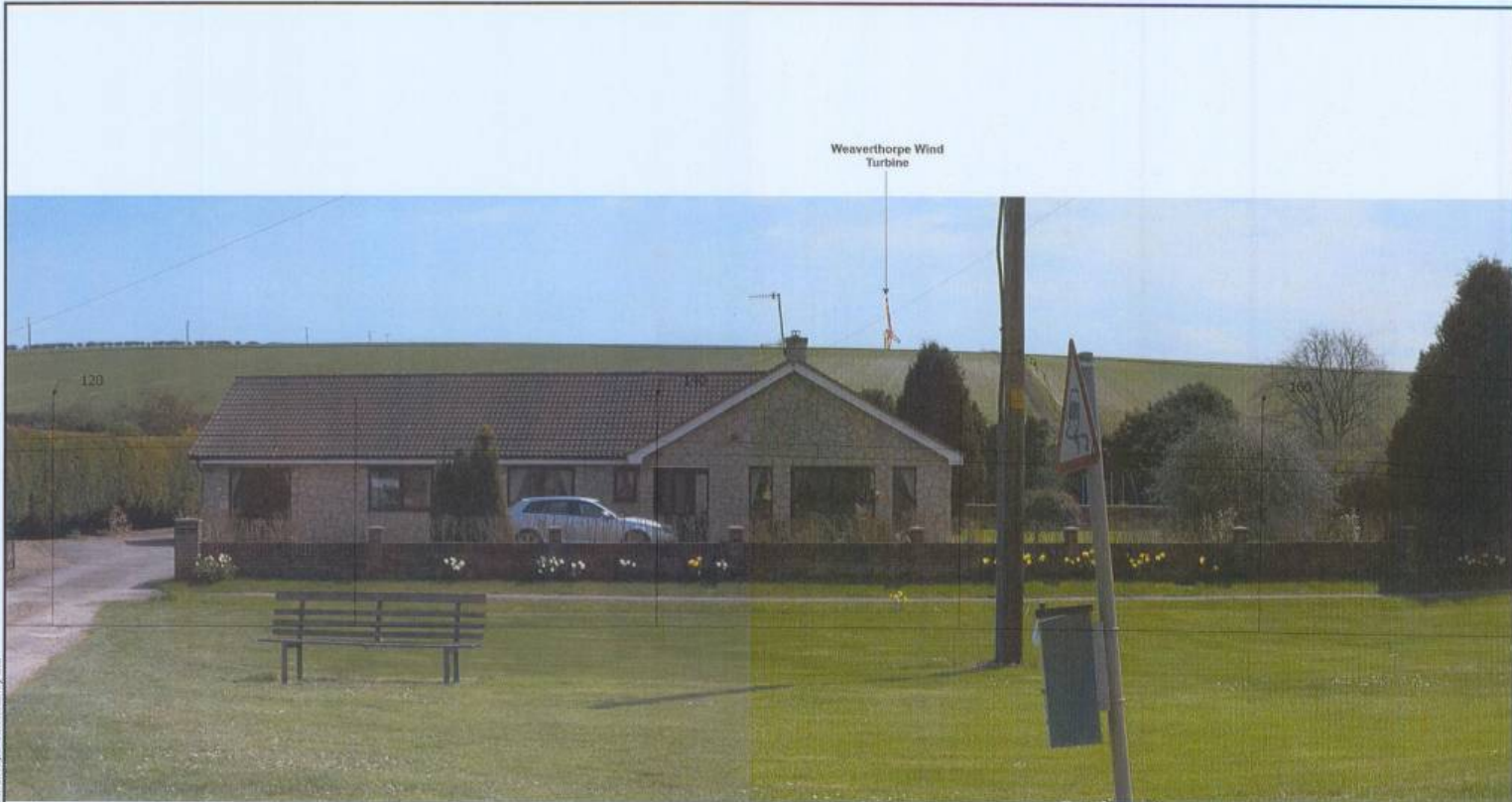
12 Weaverthorpe Lane
 North Cave
 East Yorkshire
 YO13 3JY
 Tel 01430 423204
 www.2blandscape.co.uk

Distance to turbine: 1.22km
 Bearing to turbine: 148°
 Viewpoint grid reference: 495444,470387 - see Figure 07
 Date & time of photos: 02/05/2013 12:10
 Camera: Canon Digital SLR with 50mm focal length equivalent lens
 Angle of view 50°, held A3 print at 450mm distance for accurate scale effect

Revision: -
 Scale: -
 Drawn: ACM
 Date: July 2013
 Sheet Size: A3 Landscape
 Checked: BB
 File Name: 2012-2013-Weaverthorpe-WW-Fig26.1-VP10.pdf

Project: Proposed turbine, Weaverthorpe
 Client: Weaverthorpe Wind
 Drawing title: Viewpoint 10- Existing

Fig:
 26.1



Weaverthorpe Wind
Turbine

Vertical guidelines are at intervals of 10°, numbers at 20°, where 0° is Grid North.

THIS COPY HAS BEEN MADE BY OR WITH THE
AUTHORITY OF HERMEX SERVICES CONSULTING
PURSUANT TO SECTION 17 OF THE COPYRIGHT,
DESIGN AND PATENTS ACT 1988. UNLESS
THAT ACT PROVIDES A LIMITED EXCEPTION TO
COPYRIGHT, THE WORKS HEREIN BE COPIED
WITHOUT THE PRIOR PERMISSION OF THE
COPYRIGHT OWNER.

RYEDALE DM
30 JUL 2013
DEVELOPMENT
MANAGEMENT

**2B Landscape
Consultancy Ltd**
assessment - design - visualisation - realisation

12 Ewerthorpe Lane
North Cove
East Yorkshire
HU13 8LP
Tel: 01480 420054
www.2bconsultancy.co.uk

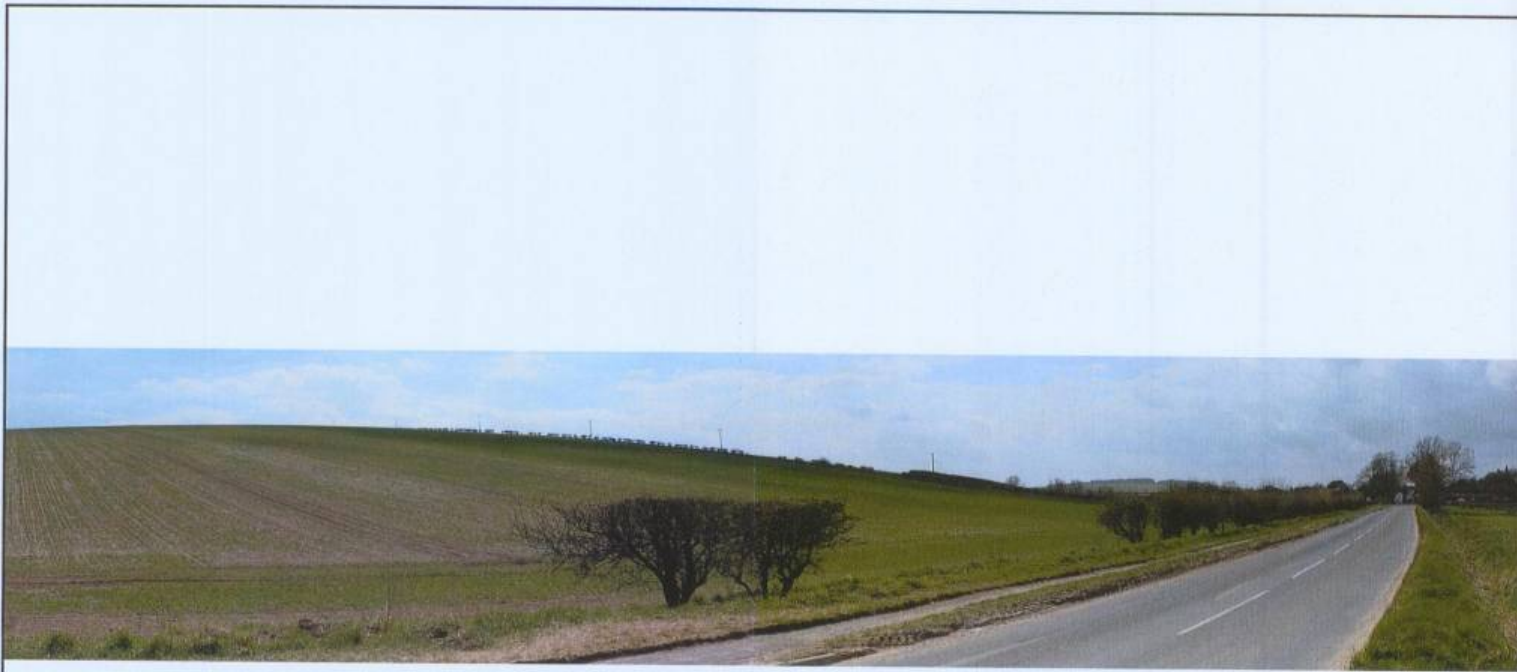
Distance to turbine: 1.22km
Bearing to turbine: 148°
Viewpoint grid reference: 495444,470387 - see Figure 07
Date & time of photos: 02/05/2013 12:10
Camera: Canon Digital SLR with 50mm focal length equivalent lens
Angle of view 50°, held A3 print at 430mm distance for accurate scale effect

Revision: -
Scale: -
Drawn: ACM
Date: July 2013

Sheet Size: A3 Landscape
Checked: BB

Project: Proposed turbine, Weaverthorpe
Client: Weaverthorpe Wind
Drawing title: Viewpoint 10 - Wireframe

Fig:
26.2



THIS COPY HAS BEEN MADE BY OR WITH THE
 AUTHORITY OF RYEDALE DISTRICT COUNCIL
 PURSUANT TO SECTION 107 OF THE COPYRIGHT,
 DESIGNS AND PATENTS ACT 1988 UNLESS
 THAT ACT PROVIDES AN EXPLICIT EXCEPTION TO
 COPYRIGHT. THE COPY MUST NOT BE COPIED
 WITHOUT THE PRIOR PERMISSION OF THE
 COPYRIGHT OWNER.

RYEDALE DM
 30 JUL 2013
 DEVELOPMENT
 MANAGEMENT

2012-2013-Weaverthorpe-WW-Fig27.1-VP12.cdf © 2B Landscape Consultancy Ltd

2B Landscape Consultancy Ltd
 assessment - design - visualisation - realisation

12 Weaverthorpe Lane
 South Cave
 East Yorkshire
 HU13 3JF
 Tel: 01482 422004
 www.2blandscape.co.uk

Distance to turbine: 1.27km
 Bearing to turbine: 171°
 Viewpoint grid reference: 495895,470613 - see Figure 07
 Date & time of photos: 02/05/2013 12:20
 Camera: Canon Digital SLR with 50mm focal length equivalent lens
 Angle of view 100°, important elements of view do not fit standard 60°, if accurate scaling effect is required, crop A3 sheet at A1 spot height at 430mm distance

Revision: -
 Scale: -
 Drawn: ACM
 Date: July 2013
 Sheet Size: A3 Landscape
 Checked: BB
 File Name: 2012-2013-Weaverthorpe-WW-Fig27.1-VP12.pdf

Project: Proposed turbine, Weaverthorpe
 Client: Weaverthorpe Wind
 Drawing title: Viewpoint 12- Existing

Fig:
27.1



Vertical guidelines are at intervals of 10°, numbers at 20°, where 0° is Grid North.

THIS COPY HAS BEEN MADE BY OR WITH THE
 AUTHORITY OF RYedale DISTRICT COUNCIL
 PURSUANT TO SECTION 41 OF THE COPYRIGHT,
 DESIGNS AND PATENTS ACT 1988, UNLESS
 THAT ACT PROVIDES A RELEVANT EXCEPTION TO
 COPYRIGHT. THE COPY MUST NOT BE COPIED
 WITHOUT THE PRIOR PERMISSION OF THE
 COPYRIGHT OWNER.

RYEDALE DM
 30 JUL 2013
 DEVELOPMENT
 MANAGEMENT

2012-203-Weaverthorpe-WW-Fig27-VP12.odr © 2B Landscape Consultancy Ltd

2B Landscape Consultancy Ltd
 assessment · design · visualisation · realisation

12 Ewell House Lane
 North Cave
 East Yorkshire
 YO15 2EP
 Tel: 01430 420054
 www.2blandscape.co.uk

Distance to turbine: 1.27km
 Bearing to turbine: 171°
 Viewpoint grid reference: 495895,470613 - see Figure 07
 Date & time of photos: 02/05/2013 12:20
 Camera: Canon Digital SLR with 50mm focal length equivalent lens
 Angle of view 100°, important elements of view do not fit standard 50°. If accurate scaling
 effect is required, print A3 sheet at A1 and hold at 430mm distance.

Revision: -
 Scale: -
 Drawn: ACM
 Date: July 2013
 Sheet Size: A3 Landscape
 Checked: BB
 File Name: 2012-203-Weaverthorpe-WW-Fig27-2-VP12.pdf

Project: Proposed turbine, Weaverthorpe
 Client: Weaverthorpe Wind
 Drawing title: Viewpoint 12 - Wireframe

Fig:
 27.2

THIS COPY HAS BEEN MADE BY US WITH THE AUTHORITY OF RYEDALE DISTRICT COUNCIL PURSUANT TO SECTION 47 OF THE COPYRIGHT, DESIGNS AND PATENTS ACT 1988. UNLESS THAT ACT PROVIDES A SPECIFIC EXCEPTION TO COPYRIGHT, THE COPY MUST NOT BE COPIED WITHOUT THE PRIOR PERMISSION OF THE COPYRIGHT OWNER.



RYEDALE DM
30 JUL 2013
DEVELOPMENT
MANAGEMENT

2012-203-Weaverthorpe-WW-Fig28-1-VP14.dcf © 2B Landscape Consultancy Ltd

2B Landscape Consultancy Ltd
assessment - design - visualisation - realisation

12 Everhope Lane
North Cove
East Yorkshire
YO15 2LP
Tel: 01430 402224
www.2blandscape.co.uk

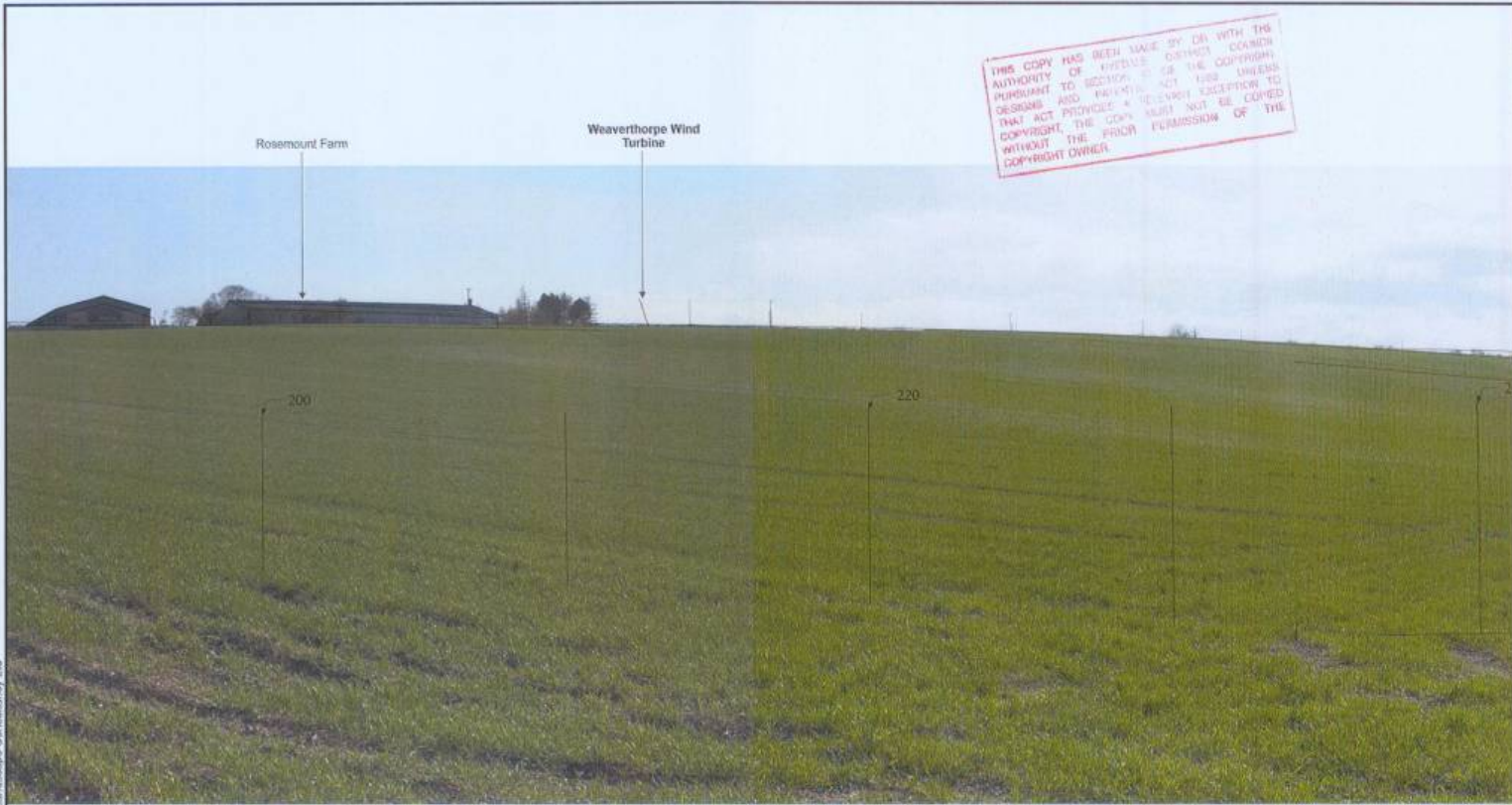
Distance to turbine: 1.11km
Bearing to turbine: 214°
Viewpoint grid reference: 496707.470296 - see Figure 07
Date & time of photos: 02/05/2013 15:50
Camera: Canon Digital SLR with 50mm focal length equivalent lens
Angle of view 50°. Hold A3 print at 430mm distance for accurate scale effect

Revision: -
Scale: -
Drawn: ACM
Date: July 2013
Sheet Size: A3 Landscape
Checked: BB
File Name: 2012-203-Weaverthorpe-WW-Fig28.1-VP14.pdf

Project: Proposed turbine, Weaverthorpe
Client: Weaverthorpe Wind
Drawing title: Viewpoint 14 - Existing

Fig:
28.1

THIS COPY HAS BEEN MADE BY DR WITH THE
 AUTHORITY OF OFFICE DESIGN COUNCIL
 PURSUANT TO SECTION 5 OF THE COPYRIGHT,
 DESIGN AND PATENTS ACT 1988 UNLESS
 THAT ACT PROVIDES A REVERSE EXCEPTION TO
 COPYRIGHT, THE COPY MUST NOT BE COPIED
 WITHOUT THE PRIOR PERMISSION OF THE
 COPYRIGHT OWNER



Vertical guidelines are at intervals of 10°, numbers at 20°, where 0° is Grid North

HYEDAILE DM
 30 JUL 2013
 DEVELOPMENT
 MANAGEMENT

2012-203-Weaverthorpe-WW-Fig28-VP14.cdr © 2B Landscape Consultancy Ltd

2B Landscape Consultancy Ltd
 assessment - design - visualisation - realisation
 www.2blandscape.co.uk

12 Everthorpe Lane
 North Cave
 East Yorkshire
 YO18 5LF
 Tel: 01480 423204

Distance to turbine: 1.11km
 Bearing to turbine: 214°
 Viewpoint grid reference: 496707.470296 - see Figure 07
 Date & time of photos: 02/05/2013 15:50
 Camera: Canon Digital SLR with 50mm focal length equivalent lens
 Angle of view 50°, held A3 print at 430mm distance for accurate scale effect

Revision: -
 Scale: -
 Drawn: ACM
 Date: July 2013
 Sheet Size: A3 Landscape
 Checked: BB
 File Name: 2012-203-Weaverthorpe-WW-Fig28.2-VP14.pdf

Project: Proposed turbine, Weaverthorpe
 Client: Weaverthorpe Wind
 Drawing title: Viewpoint 14 - Wireframe

Fig:
 28.2

THIS COPY HAS BEEN MADE BY OR WITH THE AUTHORITY OF RYSDALE DISTRICT COUNCIL PURSUANT TO SECTION 47 OF THE COPYRIGHT, DESIGNS AND PATENTS ACT 1988, UNLESS THAT ACT PROVIDES A RELEVANT EXCEPTION TO COPYRIGHT. THE COPY MUST NOT BE COPIED WITHOUT THE PRIOR PERMISSION OF THE COPYRIGHT OWNER.



RYSDALE DM
30 JUL 2013
DEVELOPMENT
MANAGEMENT

2012-203-Weaverthorpe-WW-Fig29-VP16.pdf © 2B Landscape Consultancy Ltd

 **2B Landscape Consultancy Ltd**
assessment - design - visualisation - realisation

12 Everidge Lane
North Cave
East Yorkshire
YO13 2LP
Tel 01430 43324
www.2blandscape.co.uk

Distance to turbine: 1.82km
Bearing to turbine: 199°
Viewpoint grid reference: 496655,471091 - see Figure 07
Date & time of photos: 02/05/2013 13:20
Camera: Canon Digital SLR with 50mm focal length equivalent lens
Angle of view 50°, held A3 print at 430mm distance for accurate scale effect

Revision: -
Scale: -
Drawn: ACM
Date: July 2013

Sheet Size: A3 Landscape
Checked: BB
File Name: 2012-203-Weaverthorpe-WW-Fig29,1-VP16.pdf

Project: Proposed turbine, Weaverthorpe
Client: Weaverthorpe Wind
Drawing title: Viewpoint 16- Existing

Fig:
29.1

THIS COPY HAS BEEN MADE BY OR WITH THE AUTHORITY OF HERMANS CONSULTANCY GROUPS AND SHOULD BE USED ONLY FOR THE PURPOSES AND IN THE MANNER THAT ACT (PROCESSES & OTHERS) ACCEPTED BY COPYRIGHT. THIS COPY MUST NOT BE COPIED WITHOUT THE PRIOR PERMISSION OF THE COPYRIGHT OWNER.



Vertical guidelines are at intervals of 10°, numbers at 20°, where 0° is Grid North.

RYSDALE DM
30 JUL 2013
DEVELOPMENT
MANAGEMENT

2012-203-Weaverthorpe-WW-Fig29.2-VP16.cdr © 2013 Landscape Consultancy Ltd

ZB Landscape Consultancy Ltd
assessment - design - visualisation - realisation

17 Ewellthorpe Lane
North Cove
East Yorkshire
YO19 5LP
Tel: 01430 403264
www.zblandscape.co.uk

Distance to turbine: 1.82km
Bearing to turbine: 199°
Viewpoint grid reference: 496655,471091 - see Figure 07
Date & time of photos: 02/05/2013 13:20
Camera: Canon Digital SLR with 50mm focal length equivalent lens
Angle of view 50°, held A3 print at 430mm distance for accurate scale effect

Revision: -
Scale: -
Drawn: ACM
Date: July 2013

Sheet Size: A3 Landscape
Checked: BB

File Name: 2012-203-Weaverthorpe-WW-Fig29.2-VP16.pdf

Project: Proposed turbine, Weaverthorpe
Client: Weaverthorpe Wind
Drawing title: Viewpoint 16- Wireframe

Fig:
29.2

2012-203-Weaverthorpe-WW-Fig30-VP18.dcf © 2B Landscape Consultancy Ltd



THIS COPY HAS BEEN MADE BY OR WITH THE
AUTHORITY OF RYEDALE DISTRICT COUNCIL
PURSUANT TO SECTION 21 OF THE COPYRIGHT,
DESIGNS AND PATENTS ACT 1988. THE
DESIGNS AND PATENTS ACT 1988 IMPLIES
THAT ACT PROHIBITS A SEPARATE COPYRIGHT IN
COPYRIGHT. THE COPY MUST NOT BE COPIED
WITHOUT THE EXPRESS PERMISSION OF THE
COPYRIGHT OWNER

RYEDALE DM
30 JUL 2013
DEVELOPMENT
MANAGEMENT

 **2B Landscape
Consultancy Ltd**
assessment - design - visualisation - realisation

12 Weaverthorpe Lane
North Cotes
East Yorkshire
HU12 8JF
Tel: 01482 423204
www.2blandscape.co.uk

Distance to turbine: 4.09km
Bearing to turbine: 201°
Viewpoint grid reference: 497549,473191 - see Figure 07
Date & time of photos: 02/05/2013 13:50
Camera: Canon Digital SLR with 50mm focal length equivalent lens
Angle of view 50°, held A3 print at 430mm distance for accurate scale effect

Revision: -
Scale: -
Drawn: ACM
Date: July 2013
Sheet Size: A3 Landscape
Checked: BB
File Name: 2012-203-Weaverthorpe-WW-Fig30.1-VP18.pdf

Project: Proposed turbine, Weaverthorpe
Client: Weaverthorpe Wind
Drawing title: Viewpoint 18- Existing

Fig:
30.1

THIS COPY HAS BEEN MADE BY OR WITH THE AUTHORITY OF RYEDALE DISTRICT COUNCIL PURSUANT TO SECTION 107 OF THE COPYRIGHT, DESIGN AND PATENTS ACT 1988. UNLESS THAT ACT PROVIDES A TECHNICAL EXCEPTION TO COPYRIGHT, THE COPY MUST NOT BE COPIED WITHOUT THE PRIOR PERMISSION OF THE COPYRIGHT OWNER.



Vertical guidelines are at intervals of 10°, numbers at 20°, where 0° is Grid North.

RYEDALE DM
30 JUL 2013
DEVELOPMENT
MANAGEMENT

2012-2013-Weaverthorpe-WW-Fig30-VP18.cdr © 2B Landscape Consultancy Ltd

2B Landscape Consultancy Ltd
assessment - design - visualisation - realisation

12 Ewerthorpe Lane
North Cove
East Yorkshire
HU19 8LP
Tel: 01482 423004
www.2blandscape.co.uk

Distance to turbine: 4.09km
Bearing to turbine: 201°
Viewpoint grid reference: 497549.473191 - see Figure 07
Date & time of photos: 02/05/2013 13:50
Camera: Canon Digital SLR with 50mm focal length equivalent lens
Angle of view 50°, held A3 print at 430mm distance for accurate scale effect

Revision: -
Scale: -
Drawn: ACM
Date: July 2013
Sheet Size: A3 Landscape
Checked: BB
File Name: 2012-2013-Weaverthorpe-WW-Fig30-2-VP18.pdf

Project: Proposed turbine, Weaverthorpe
Client: Weaverthorpe Wind
Drawing title: Viewpoint 18 - Wireframe

Fig:
30.2



THIS COPY HAS BEEN MADE BY OR WITH THE
 AUTHORITY OF RYSDALE DISTRICT COUNCIL
 PURSUANT TO SECTION 107 OF THE COPYRIGHT,
 DESIGN AND PATENTS ACT 1988. UNLESS
 THAT ACT PROVIDES A DIFFERENT EXCEPTION TO
 COPYRIGHT, THE USER MUST NOT BE COPIED
 WITHOUT THE PRIOR PERMISSION OF THE
 COPYRIGHT OWNER.

RYSDALE DM

30 JUL 2013
 DEVELOPMENT
 MANAGEMENT

2012-203-Weaverthorpe-WW-Fig31-VP26.odr © 2B Landscape Consultancy Ltd

2B Landscape Consultancy Ltd
 assessment - design - visualisation - realisation

12 Ewerthorpe Lane
 North Cove
 East Yorkshire
 YO21 3JF
 Tel: 01482 432004
 www.2blandscape.co.uk

Distance to turbine: 4.11km
 Bearing to turbine: 277°
 Viewpoint grid reference: 500182,468936 - see Figure 07
 Date & time of photos: 02/05/2013 14:55
 Camera: Canon Digital SLR with 50mm focal length equivalent lens
 Angle of view 50°, held A3 print at 430mm distance for accurate scale effect

Revision: -
 Scale: -
 Drawn: ACM
 Date: July 2013
 Sheet Size: A3 Landscape
 Checked: BB
 File Name: 2012-203-Weaverthorpe-WW-Fig31-1-VP26.pdf

Project: Proposed turbine, Weaverthorpe
 Client: Weaverthorpe Wind
 Drawing title: Viewpoint 26 - Existing

Fig:
 31.1



Vertical guidelines are at intervals of 10°, numbers at 20°, where 0° is Grid North.

THIS COPY HAS BEEN MADE BY OR WITH THE AUTHORITY OF RYEDALE DISTRICT COUNCIL PURSUANT TO SECTION 107 OF THE COPYRIGHT, DESIGNS AND PATENTS ACT 1988. UNLESS THAT ACT PROVIDES A RELEVANT EXCEPTION TO COPYRIGHT, THE COPY MUST NOT BE COPIED WITHOUT THE PRIOR PERMISSION OF THE COPYRIGHT OWNER.

RYEDALE DM

30 JUL 2013

DEVELOPMENT
MANAGEMENT

2012-203-Weaverthorpe-WW-Fig31.2-VP26.pdf © 2B Landscape Consultancy Ltd

2B Landscape Consultancy Ltd
assessment - design - visualisation - realisation

12 Endeavour Lane
North Cove
East Yorkshire
YO19 2LF
Tel: 01430 455204
www.2blandscape.co.uk

Distance to turbine: 4.11km
Bearing to turbine: 277°
Viewpoint grid reference: 500182,468936 - see Figure 07
Date & time of photos: 02/05/2013 14:55
Camera: Canon Digital SLR with 50mm focal length equivalent lens
Angle of view: 50°, held A3 print at 430mm distance for accurate scale effect

Revision: -
Scale: -
Drawn: ACM
Date: July 2013
Sheet Size: A3 Landscape
Checked: BB
File Name: 2012-203-Weaverthorpe-WW-Fig31.2-VP26.pdf

Project: Proposed turbine, Weaverthorpe
Client: Weaverthorpe Wind
Drawing title: Viewpoint 26 - Wireframe

Fig:
31.2

THIS COPY HAS BEEN MADE BY OR WITH THE AUTHORITY OF RYEDALE DISTRICT COUNCIL PURSUANT TO SECTION 51 OF THE COPYRIGHT DESIGNS AND PATENTS ACT 1988 UNLESS THAT ACT PROVIDES A PARTICULAR EXCEPTION TO COPYRIGHT. THE COPY MUST NOT BE COPIED WITHOUT THE PRIOR PERMISSION OF THE COPYRIGHT OWNER.



RYEDALE DM
30 JUL 2013
DEVELOPMENT
MANAGEMENT

2012-2013-Weaverthorpe-WW-Fig32.VP30.caf © 2B Landscape Consultancy Ltd

 **2B Landscape Consultancy Ltd**
assessment - design - visualisation - realisation

12 Weaverthorpe Lane
North Cave
East Yorkshire
YO13 3JF
Tel: 01430 423204
www.2blandscape.co.uk

Distance to turbine: 2.01km
Bearing to turbine: 313°
Viewpoint grid reference: 497589,488014 - see Figure 07
Date & time of photos: 02/05/2013 15:05
Camera: Canon Digital SLR with 50mm focal length equivalent lens
Angle of view 50°, hold A3 print at 430mm distance for accurate scale effect.

Revision: -
Scale: -
Drawn: ACM
Date: July 2013
Sheet Size: A3 Landscape
Checked: BB
File Name: 2012-2013-Weaverthorpe-WW-Fig32.1-VP30.pdf

Project: Proposed turbine, Weaverthorpe
Client: Weaverthorpe Wind
Drawing title: Viewpoint 30- Existing

Fig:
32.1

THIS COPY HAS BEEN MADE BY OR WITH THE AUTHORITY OF RYEDALE DISTRICT COUNCIL PURSUANT TO SECTION 19 OF THE COPYRIGHT DESIGNS AND PATENTS ACT 1988 UNLESS THAT ACT PROVIDES A RELEVANT EXCEPTION TO COPYRIGHT. THE COPY MUST NOT BE COPIED WITHOUT THE PRIOR PERMISSION OF THE COPYRIGHT OWNER.



Vertical guidelines are at intervals of 10", numbers at 20", where 0" is Grid North.

RYEDALE DM

30 JUL 2013

DEVELOPMENT
MANAGEMENT

2B Landscape Consultancy Ltd
assessment - design - visualisation - realisation

12 Evedenham Lane
North Cote
East Yorkshire
HU15 2JZ
Tel: 01482 422001
www.2blandscape.co.uk

Distance to turbine: 2.01km
Bearing to turbine: 313°
Viewpoint grid reference: 497589.468014 - see Figure 07
Date & time of photos: 02/05/2013 15:05
Camera: Canon Digital SLR with 50mm focal length equivalent lens
Angle of view 50°, hold A3 print at 430mm distance for accurate scale effect

Revision: -
Scale: -
Drawn: ACM
Date: July 2013

Sheet Size: A3 Landscape
Checked: BB

File Name: 2012-203-Weaverthorpe-WW-Fig32.2-VP30.pdf

Project: Proposed turbine, Weaverthorpe

Client: Weaverthorpe Wind
Drawing title: Viewpoint 30 - Wireframe

Fig:
32.2